

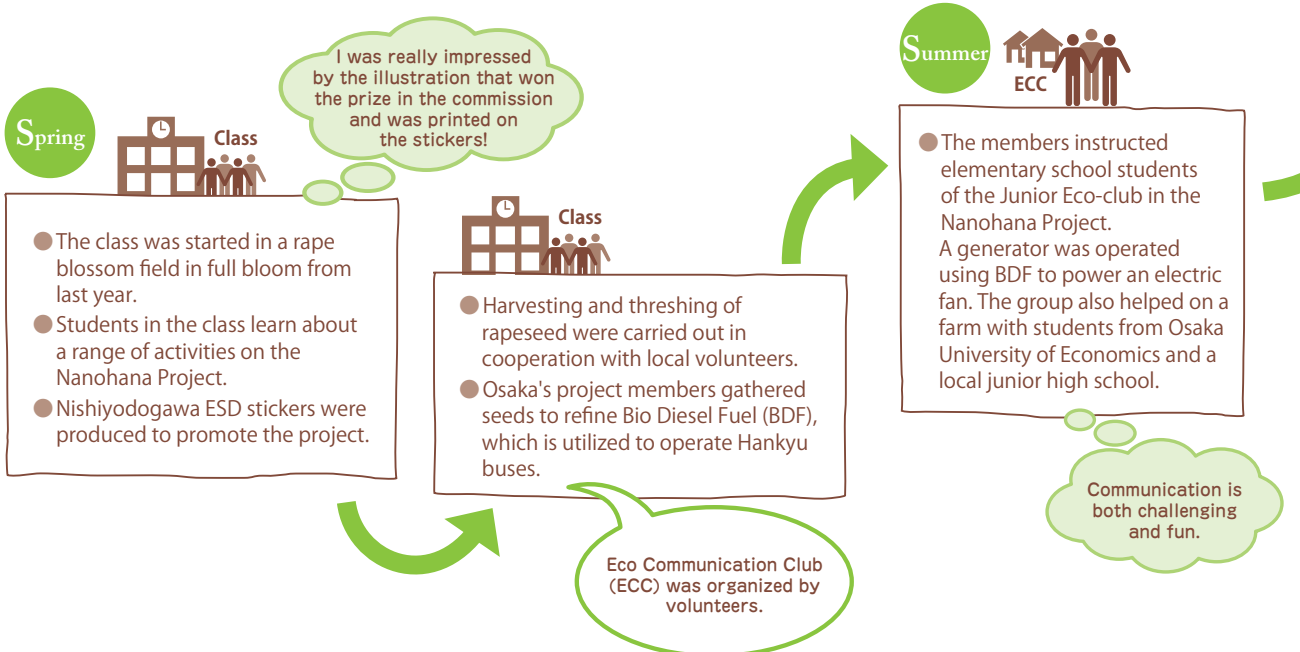
## ESD to lead the action

Do you think activities to create a sustainable community and ESD are same ?  
It is difficult to draw a line between them.

For example, Osaka's Nishiyodogawa ESD Commission members from high schools, universities and Girl Scout troops tackled a project for a sustainable transportation system by adopting the Nanohana (rape blossom) Project. Nishiyodogawa High School students also work on the Nanohana Project through compulsory subjects on the environment, in which they learn about the history of local pollution to enable them to reconsider societal matters. The project has also spawned the Eco Communication Club (ECC), which has increased its activities in the area and been developed while interacting with other commission members.

### ESD at Nishiyodogawa High School

#### <Student Comments>

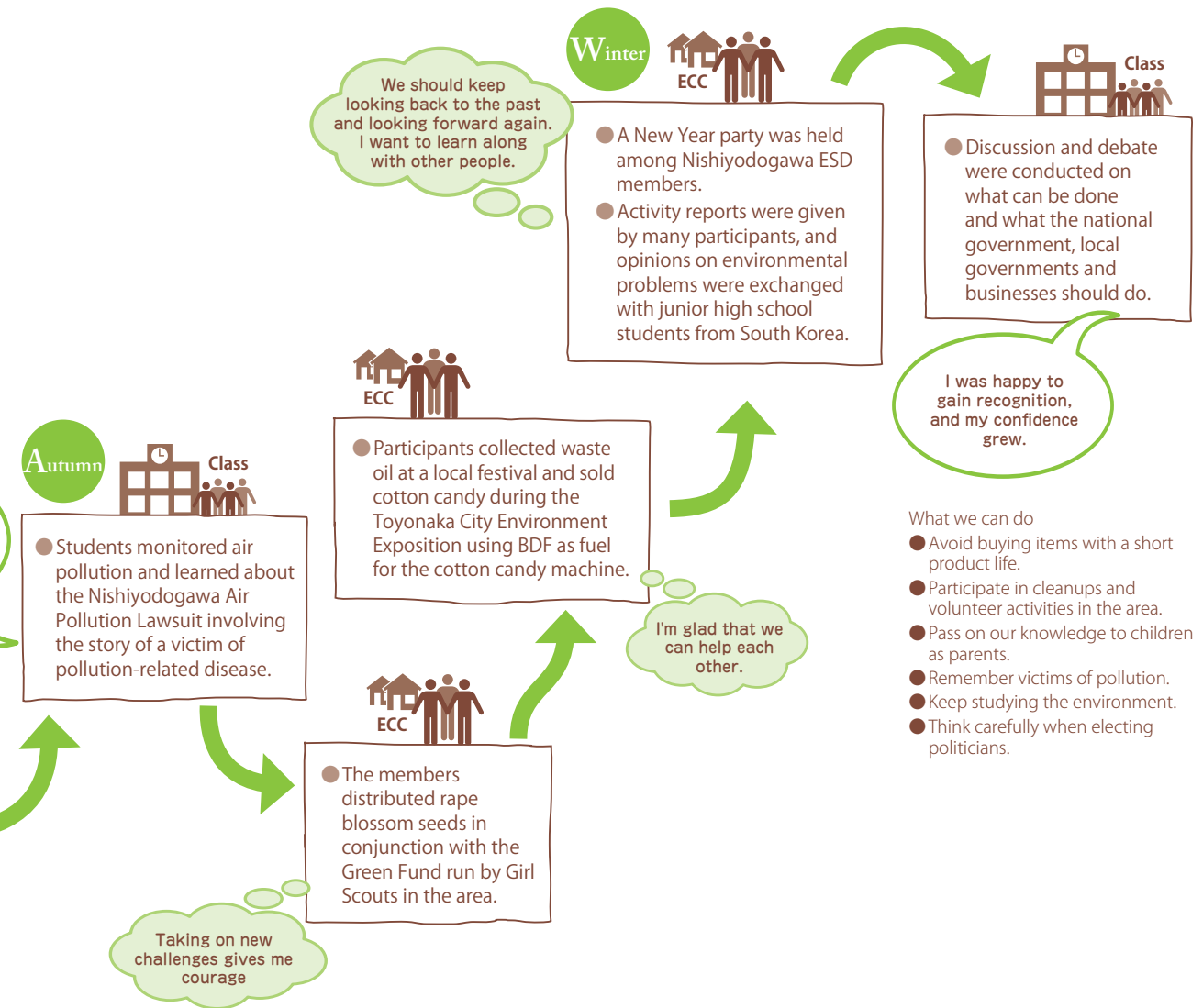


#### \* What is the Nanohana Project?

This is a recycling-oriented project in which students grow rape blossom and cook dishes using oil extracted from the plants. Moreover, the waste oil is utilized for driving cars, and rape blossom helps to absorb the CO<sub>2</sub> emitted by cars. The project is now spreading across the nation.

#### \* What is BDF (Bio Diesel Fuel)?

This is an alternative fuel derived from the fat of animals and plants. It is used for diesel-engine vehicles including cars, ships, agricultural instruments and generators, and has received worldwide attention as one of the possible solutions to environmental problems.



ESD consists of education for activities and activities for education.

ESD is not just a way of acquiring knowledge. It is also:

- A way to actually experience and consider knowledge and share it with others
  - A way to learn about other members' various opinions and hear ideas from a range of positions
  - A way to reach agreement and learn what we can do while accepting different values and opinions
- Education to create activities can be achieved by adopting such hands-on and problem-solving methods.